

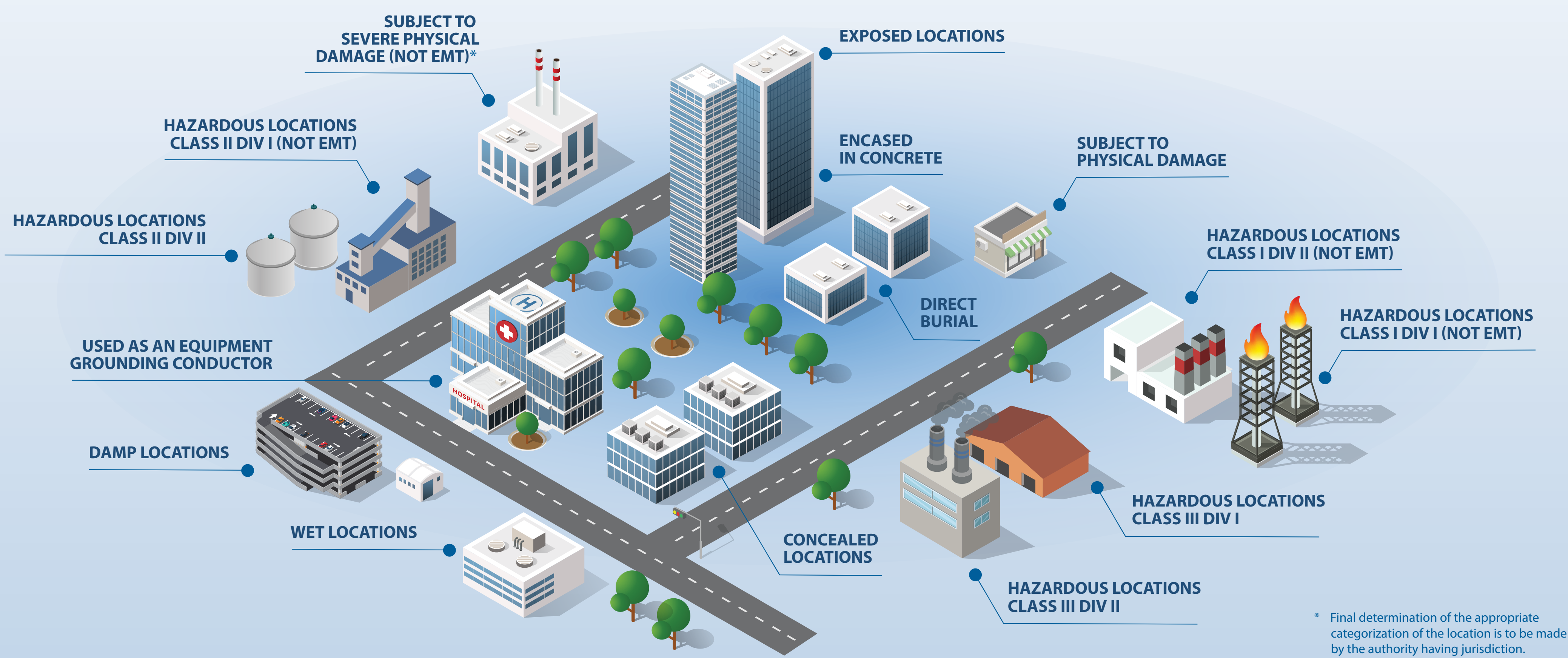
STEEL CONDUIT

THE WINNING WIRING SOLUTION

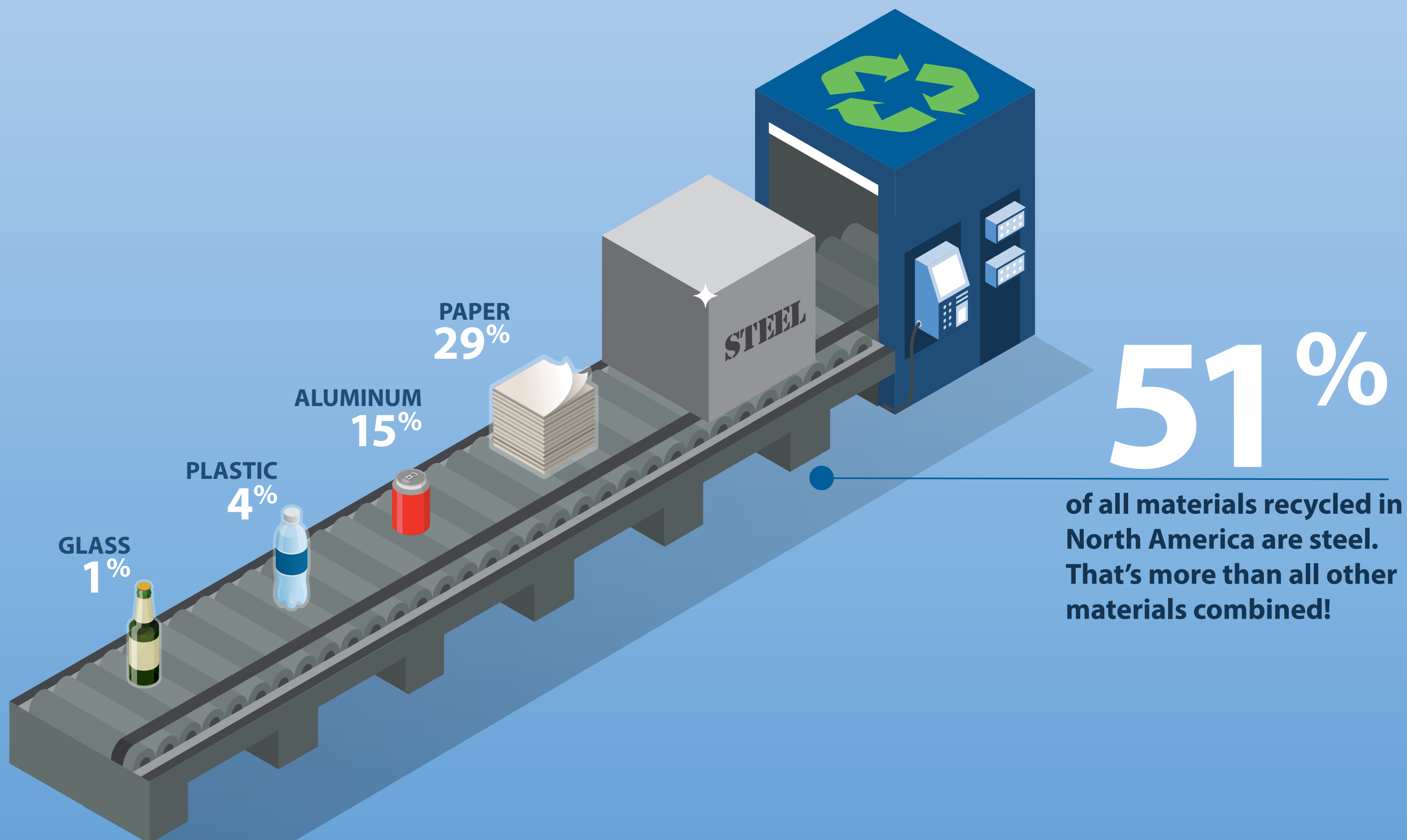


MOST UNIVERSAL

As buildings get more complex, the National Electric Code® (NFPA 70) places more restrictions on more wiring methods — but steel conduit is still allowed everywhere. That's because it provides the best protection in every location.



MOST SUSTAINABLE



When you choose steel conduit, you choose a wiring solution that supports sustainability efforts. In fact,

60–80M TONS OF STEEL SCRAP ARE RECYCLED PER YEAR

MOST FLEXIBLE AND AFFORDABLE!

As buildings change and expand over time, other wiring solutions have to be removed and reinstalled — but steel conduit can be reused again and again. It might cost more upfront, but steel conduit delivers significant savings over time!

INITIAL OFFICE BUILDING INSTALL	INITIAL OFFICE BUILDING INSTALL
Materials \$25,373	Materials \$13,347
Labor \$11,318	Labor \$27,451
YEAR 4 — SHORT CIRCUIT	YEAR 4 — SHORT CIRCUIT
Materials \$2,192	Materials \$352
Labor \$1,341	Labor \$484
Business Downtime \$20,000	Business Downtime \$5,000
Removed Wire Scrap Value -\$444	Removed Wire Scrap Value -\$107
YEAR 7 — LIGHT R&D CONVERSION	YEAR 7 — LIGHT R&D CONVERSION
Materials \$4,783	Materials \$1,703
Labor \$2,232	Labor \$2,527
YEAR 10 — HEALTH CARE CONVERSION	YEAR 10 — HEALTH CARE CONVERSION
Materials \$2,113	Materials \$1,012
Labor \$24,070	Labor \$7,142
Removed Wire Scrap Value -\$373	Removed Wire Scrap Value N/A
\$92,605	\$58,912
	\$33,693 SAVINGS

For details and the full BOM, read our report, "Conduit Beats MC Cable in a First-10-years Cost Comparison."

LEARN MORE AT
STEELTUBEINSTITUTE.ORG